



**- HOTEL -  
BELLINZONA**

**SINCE 1903**

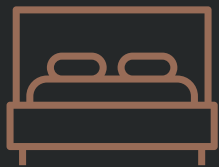
**CONFERENCE.**

---

## FOR A CURATED EVENT EXPERIENCE.

Acclaimed for its gourmet food & wine, gorgeous location and attentive service, Hotel Bellinzona offers premium corporate and event spaces located just 60 minutes from Melbourne Airport. Our event managers and hotel staff boast a wealth of experience in organising and facilitating

a range of events, including work conferences, celebrations and wellness retreats. Our many function rooms feature flexible furniture arrangements, audio-visual equipment, remarkable decor and stunning views of the forest and our manicured gardens.



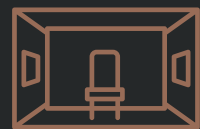
**1-130**

SLEEP



**60**

MINUTES FROM  
MELBOURNE



**8**

EVENT SPACES



**2-200**

DELEGATES



**DINING**

TAILORED & ONSITE



**BESPOKE**

EVENT PACKAGES

## SLEEP

Quintessential Hotel Bellinzona, our rooms are rich and sophisticated, crafted for comfort. A plush, Hotel Bellinzona signature bed awaits, or two singles if required. Our complimentary business' include The Amalfi and The Houses Daylesford, giving you a bespoke offering for your stay, perfect for management or breakaway groups.

— THE —  
**OXFORD**  
DINING ROOM

— THE —  
**VIRGIN**  
KITCHEN

— THE —  
**LOBBY**  
BAR

## EAT

The Daylesford and Hepburn Springs region is widely known for its fresh produce, artisanal food products and gastronomic dining. Hotel Bellinzona reflects its surrounds in the fine wines and culinary delights that are offered across The Oxford Dining Room, The Virgin Restaurant and The Lobby Bar.





## CONFERENCE & EVENTS

You can comfortably host small meetings or larger conferences of 100+ delegates. Hotel Bellinzona has four main meeting rooms which are complemented by the Hepburn Swiss Italian heritage. Each room can be configured to your needs.

State of the art high tech equipment is on offer, including maxhub interactive TV screens, microphone and lecturn are all available. With advance notice, more complicated setups can be arranged.

---

**Conferences**  
**Events**  
**Birthdays**

**Expos & Seminars**  
**Wellness retreats**  
**Funerals & Wakes**

**Industry nights**  
**Baby showers**  
**Trophy nights**

**Launches**  
**High Tea**  
**Private dining**



**B**



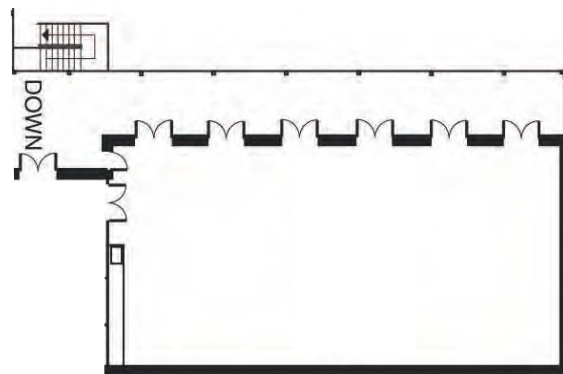
# OUR SPACES

	DIMENSION	THEATER	CLASSROOM	CLUSTER	U-SHAPE	BOARDROOM
<b>THE RENAISSANCE</b>	20 x 10	120	50	80	40	32
<b>THE MEDICI</b>	11 x 8	50	24	24	18	16
<b>THE PIAZZA</b>	18 x 9	80	40	60	34	28
<b>THE ATTICUS</b>	9 x 6.5	-	-	-	-	20
<b>THE AUGUSTUS</b>	9 x 6.5	-	-	-	-	20
<b>THE OXFORD</b>	15 x 11	-	-	-	20	20
<b>THE CIRCA</b>	12 x 7	-	-	-	20	20
<b>THE ROMULUS</b>	10 x 10	20	12	24	10	10



# THE RENAISSANCE

<b>DIMENSION</b>	<b>20 X 10</b>
<b>THEATER</b>	<b>120</b>
<b>CLASSROOM</b>	<b>50</b>
<b>CLUSTER</b>	<b>80</b>
<b>U-SHAPE</b>	<b>40</b>
<b>BOARDROOM</b>	<b>32</b>

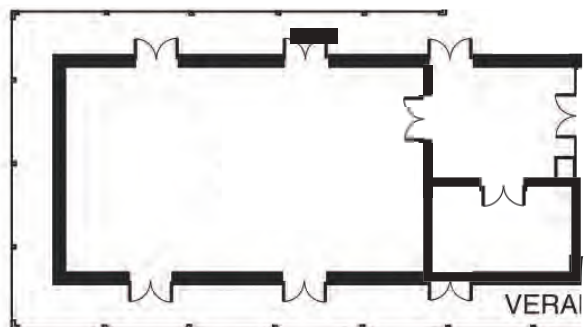


Rich in elegance, the palatial Renaissance Room is illuminated by natural light. Stunning white drapery girds the room, complemented by vibrant greenery and sweeping balcony views of the forest. The high ceilings create a sense of spaciousness. The space is perfect for larger events. A banquet dinner, or a retreat for a larger group up to 180 guests.



# THE MEDICI

<b>DIMENSION</b>	<b>11 x 8</b>
<b>THEATER</b>	<b>50</b>
<b>CLASSROOM</b>	<b>24</b>
<b>CLUSTER</b>	<b>24</b>
<b>U-SHAPE</b>	<b>18</b>
<b>BOARDROOM</b>	<b>16</b>



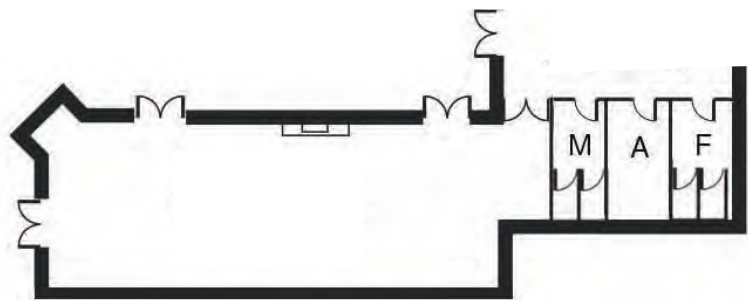
Floor to ceiling windows flood the room with natural sunlight, while the wraparound balcony boasts views of the garden and central fountain. The Medici is ideal for conferences and corporate events, accommodating from 10-120 guests. Our experienced event managers are able to configure the space to suit yoga retreats or breakout groups for all types of functions.





# THE PIAZZA

DIMENSION	<b>18 x 9</b>
THEATER	<b>80</b>
CLASSROOM	<b>40</b>
CLUSTER	<b>60</b>
U-SHAPE	<b>34</b>
BOARDROOM	<b>28</b>

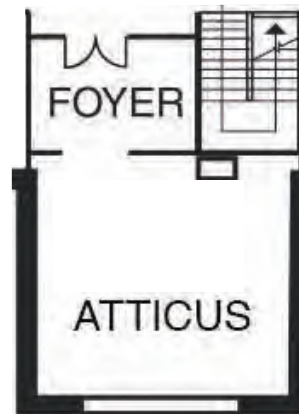


Direct access to the hotel gardens and alfresco area, spacious and flooded with sunlight. The Piazza is a multipurpose event space for corporate and social functions, including parties, yoga retreats and more. Our expert event planners will help you configure the space to accommodate your needs. Capacity up to 120 guests.



# THE ATTICUS

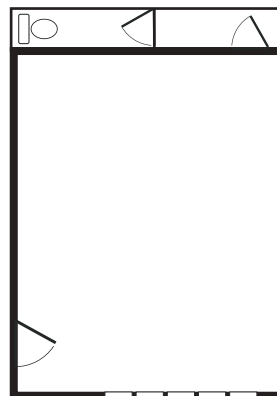
DIMENSION	<b>9 x 6.5</b>
THEATER	-
CLASSROOM	-
CLUSTER	-
U-SHAPE	-
BOARDROOM	<b>12</b>



A smaller event venue suited to modest groups of 10 - 20 with an emphasis on privacy. Featuring second storey views of the hotel surrounds, a charming open fireplace and a substantial board table. Pristine, refurbished decor that suits corporate functions and social occasions in equal measure.



DIMENSION	<b>12 x 7</b>
THEATER	-
CLASSROOM	-
CLUSTER	-
U-SHAPE	<b>20</b>
BOARDROOM	<b>20</b>

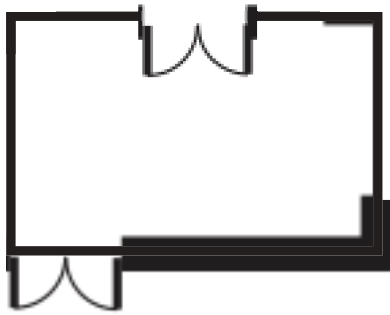


Enter The Circa, a large boardroom-style conference space flooded with natural light and garden views. Direct external access and private bathroom facilities.



# THE AUGUSTUS

DIMENSION	<b>9 x 6.5</b>
THEATER	-
CLASSROOM	-
CLUSTER	-
U-SHAPE	-
BOARDROOM	<b>20</b>

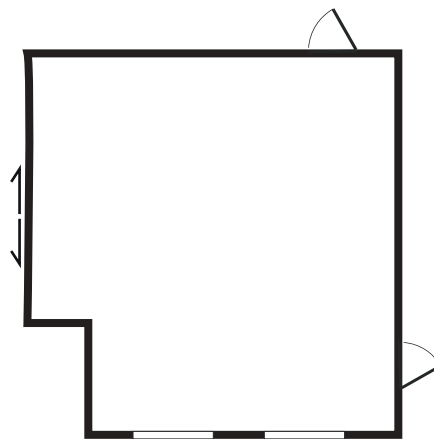


The most opulent boardroom option. Whether it is an anniversary dinner, a festive birthday filled with family and friends, or an excuse to have a remarkable experience, a special occasion requires the intimacy and style you would only dream of. Fortunately, Hotel Bellinzona has taken this need for exclusivity into consideration and created The Augustus private dining room. Opulent, extravagant, utterly delicious on all fronts.

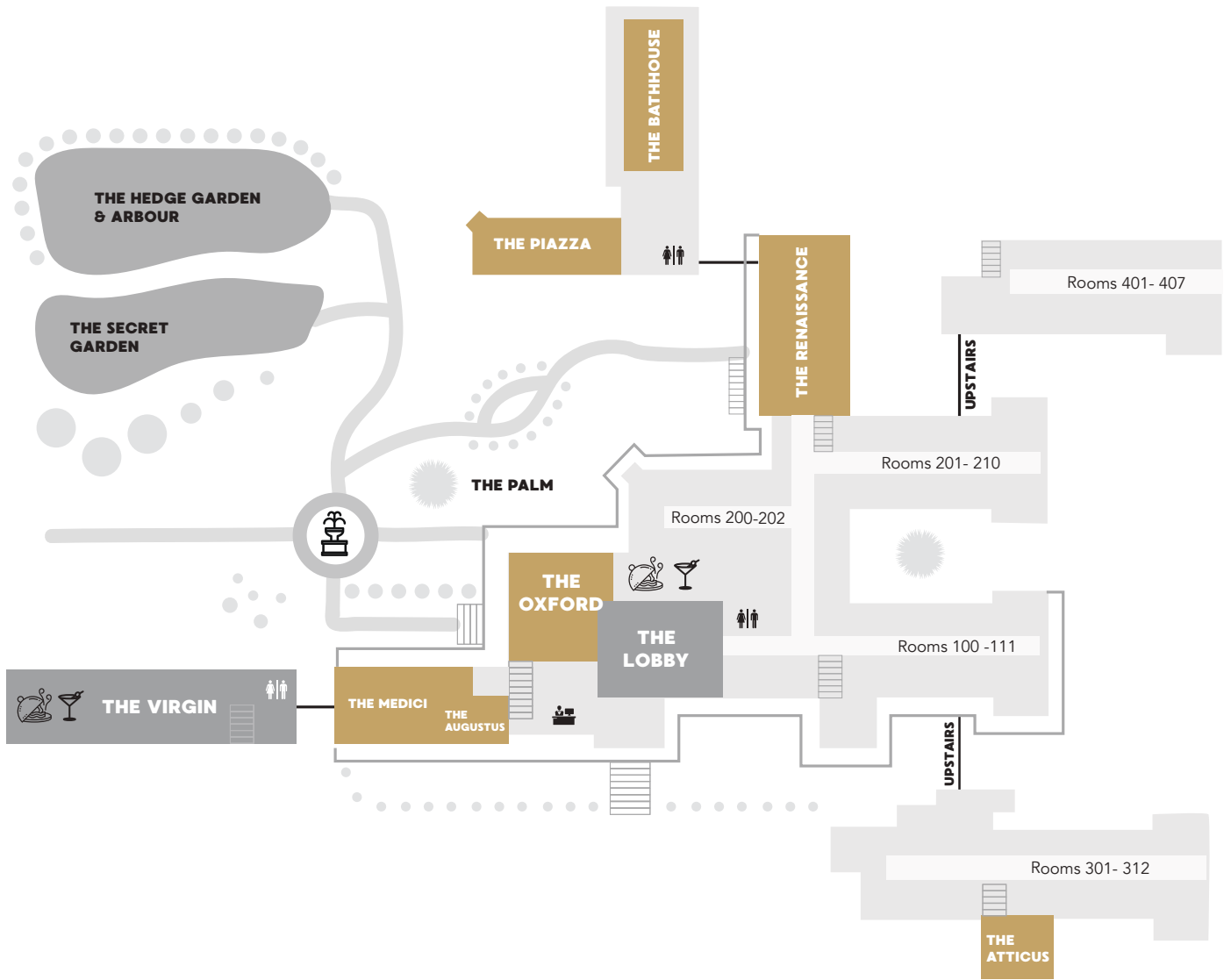


# THE ROMULUS

DIMENSION	<b>10 X 10</b>
THEATER	<b>20</b>
CLASSROOM	<b>12</b>
CLUSTER	<b>24</b>
U-SHAPE	<b>10</b>
BOARDROOM	<b>10</b>



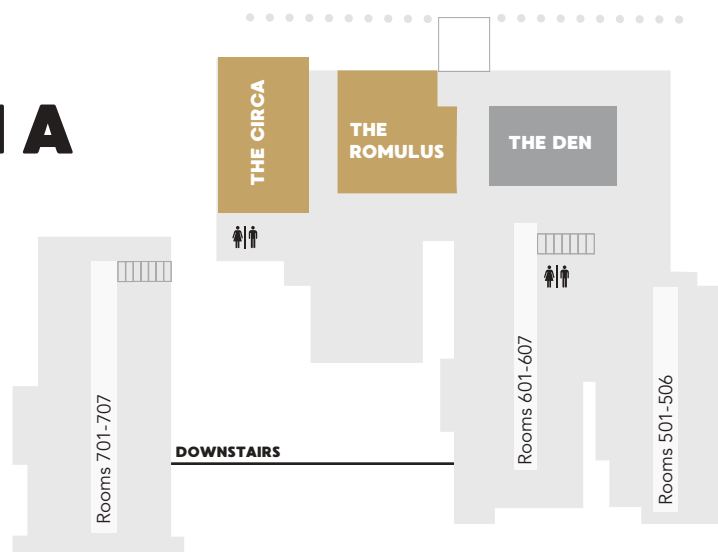
This large flexible space is perfect for many different types of events. Yoga retreats, dinners, cocktail functions, theatre-style presentations. The choice is yours.



**MAIN ROAD**

**-HOTEL-  
BELLINZONA**

**SINCE 1903**



**B**

# COMPLIMENTARY BUSINESS'

---



THE HOUSES  
DAYLESFORD

The Houses Daylesford have a portfolio of beautiful accommodation rental properties interspersed throughout Daylesford & surrounds, the centre for wellness in Victoria, Australia. Our 70+ properties provide the perfect setting for corporates, photo shoots and location hire

[thehousesdaylesford.com](http://thehousesdaylesford.com)



THE FARM  
DAYLESFORD

The Farm Daylesford is an exclusive special event venue, five minutes from Daylesford. Experience 245 acres of gorgeous countryside framed by hundreds of Australian native trees. The Barn, a huge 30m x 16m space is an off the grid venue creating a sustainable and unique environment for your event.

[thefarmdaylesford.com.au](http://thefarmdaylesford.com.au)



ALKINA LODGE  
GREAT OCEAN ROAD

Set in a prime location the Great Ocean Road, Alkina Lodge has been magnificently designed by renowned Australian architects Glenn Murcutt and Wendy Lewin with the finest of furnishings. 3 Lodges available, accommodating up to 24 guests in total

[alkinalodge.com.au](http://alkinalodge.com.au)

**B**



**B**



**-HOTEL-**  
**BELLINZONA**  
**SINCE 1903**

---

**EVENTS TEAM**  
events@bellinzona.com.au

---

**03 5348 2271**

77 Main Road  
Hepburn Springs VIC 3461

**bellinzona.com.au**  
reception@bellinzona.com.au